



Suede Paint Effects

Technical Data

Drying Time	Touch dry: 30 minutes Dry to recoat: 1 hour Hard dry: 24 hours
Minimum Application Temperature:	10°C
Appearance:	Suede-like
Application:	Ready to use
Work tools:	Clipped hair roller and a 3" or 4" brush
Spreading Rate:	One liter covers 2 - 3m ² (in three coats) when applied on a suitable substrate
Cleaning:	Warm water and soap
Recommended Application:	See the User Guide leaflet attached to the container

MESH Branding 07.07



Suede
Wall paint for a unique suede-like effect

WALLS

Suede

Creates a suede-like effect when applied on walls. Tambour's series of Color Effects. Water based.

Suede - brings color into your home, creates a fashionable ambience, introduces a prestigious and unique look with a suede-like texture.

It is recommended to combine the suede look in a room by applying **Suede** on one or two walls, as the accent color.

When you wish to create a unique, exclusive, fashionable and warm look with a suede-like texture in your bedroom or living room, **Suede** will provide the desired result.

Suede is supplied as a base for producing different fashionable shades. Follow the application instructions in the leaflet attached to the container.



Suede Shades Selection



SU626 Light Peach



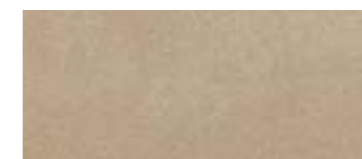
SU613 Natural Jute



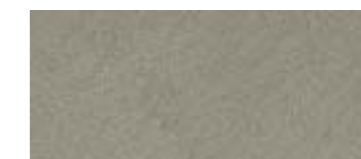
SU619 Light Grey



SU624 Delicate Orange



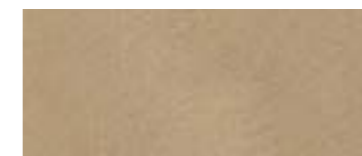
SU617 Natural Wool



SU620 Dark Grey



SU625 Golden Sand



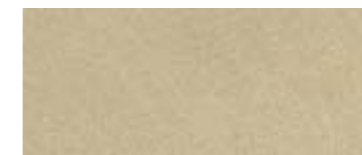
SU615 Natural Brown



SU621 Jeans Grey



SU623 Safran Yellow



SU616 Grey Linen Flax



SU618 Stone Wash Jeans



SU611 Terracotta



SU614 Wrinkled Canvas



SU622 Rose Pink



SU612 Avant-Garde Brown



SU628 Olive Green



SU627 Plum

Note: This card serves as a shades guide only and its shades may differ from the shade obtained after application.