

ANTIQUÉ *Paint Effects*



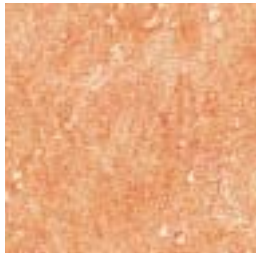
Antique - paint for home design. Gives walls a classic, period look, like that of the sumptuous palaces of Italian renaissance. Suitable for interior walls. With **Antique** paints you can easily, conveniently and simply transform any space, whether home or office, into a work of art. We recommend that you paint one wall which will become a focal point in the room and enrich it.

Reasons to choose Antique:

- Water-based, made with natural components, using the most innovative and advanced technology for the production of water-based paints.
- The paint in the container is ready for use. All you need is a brush and spatula - and you're ready to paint!
- After suitable priming, **Antique** can be used on any wall, including plasterboard and concrete.



A sample of shades for your selection



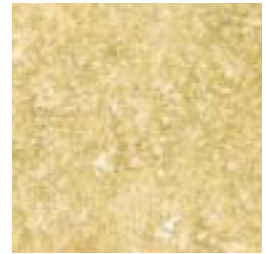
A640 Terracotta



A630 Sol



A560 Orangina



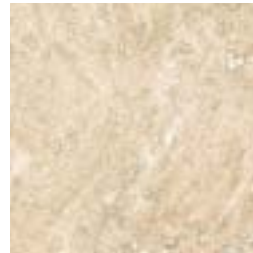
A570 Olio



A680 Pietra



A670 Moccachino



A660 Rocca



A650 Oro



A600 Granitto



A590 Paradiso



A580 Mare



A690 Primavera

Note: This card is only a guide to color. The actual paint color may differ slightly from the color that appears on this guide.



Technical Specifications:

Drying time: Dry to the touch: 2-3 hours
Final: 1-3 days

Washing: Wall may be washed 20 days after painting

Minimum temperature during painting: 10°C

Finish: Matt

Usability: Ready for use

Coverage: 1 liter of paint covers approx. 10-12 sq.m. of wall

Cleaning: Can be cleaned using water, soap and a sponge 20 days after painting

Tools: Paint brush and plastic spatula

Tool cleaning: Soap and hot water